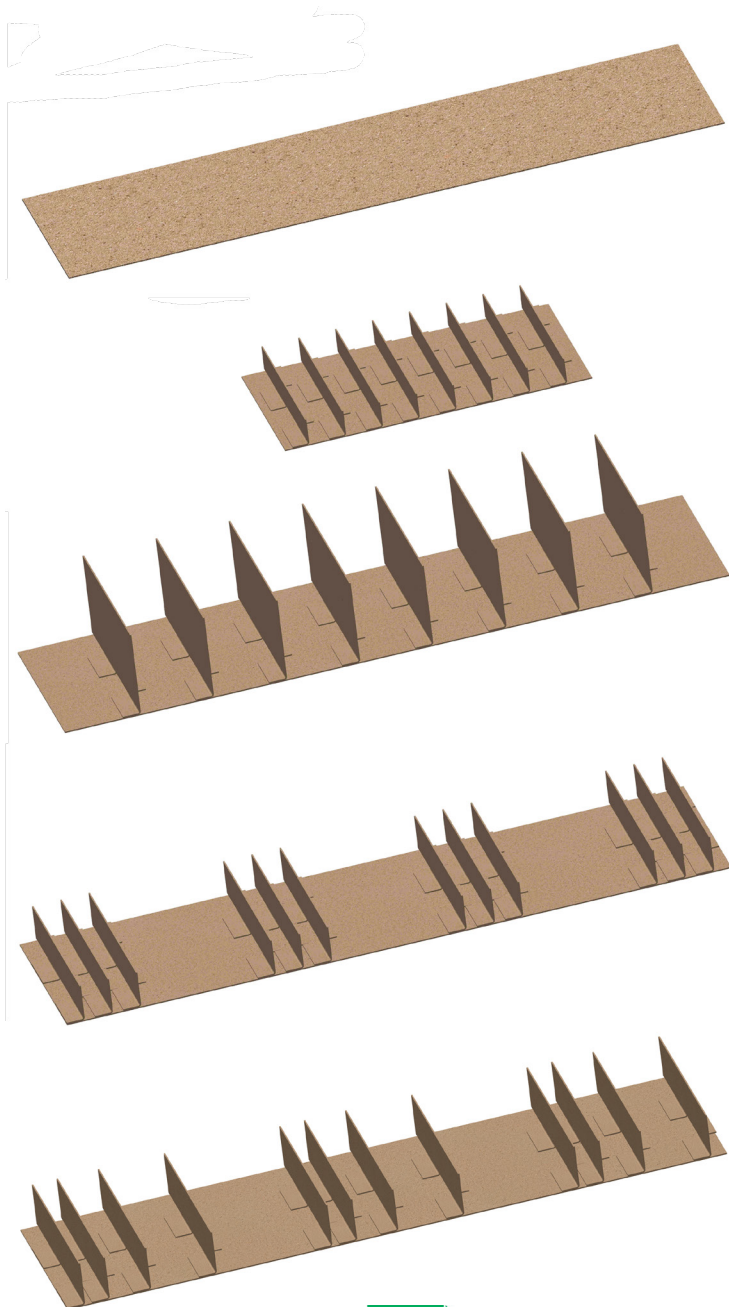


# FLEXICOMB CONCEPT

## NEXT generation's packing solution!

WALTEC and WT-FLEXIPAC offers a unique and well proven solution that solves your problems with labour intensive and expensive packing! The **FLEXICOMB CONCEPT** is developed and produced with focus on making a flexible and environmentally friendly product. This without excluding the importance of price, reliability, simplicity and of course quality!



### FLEXICOMB DESCRIPTION

As standard the **FLEXICOMB** is made of a recycled paper and a non-toxic hot melt glue. This standard recycled paper has been used within the aluminium extrusion industry for many years and has been proven to be very good for most profiles and parts.

Standard recycled paper:

Paper type	Thickness
100% recycled for base and wall	0,7 - 0,8mm

Special papers (samples):

Paper type	Thickness
100% recycled for base only,	1,1mm
100% virgin for base and wall,	0,4 - 0,8mm
Nonwoven coated Standard recycled paper	0,9 - 1,0mm
PE coated Standard recycled paper	0,5 - 0,8mm

\* Other paper specifications/qualities can be tested and used on request.

### FLEXICOMB SPECIFICATION

All **FLEXICOMB** data is stored in a database and can be used or changed at any time.

Technical specification:

Normal input data	Min	Max
Comb length (mm)	190	1200*
Comb width (mm)	-	99+/-1
Wall height (mm)	15	75
Distance to first wall (mm)	7	-
Foot length (mm)	7	12
Distance between walls (mm)	15	-
No. of walls (pcs)	0	-
No. of combs to be produced (pcs)	1	-

\* The actual max length is much longer, but then the production needs some attention!

### MULTIWALL OPTION

With our new software option you can produce **FLEXICOMB**'s with variable wall distances and almost any shape. This can for example help you to pack sets of profiles or details and it makes the concept even more flexible.

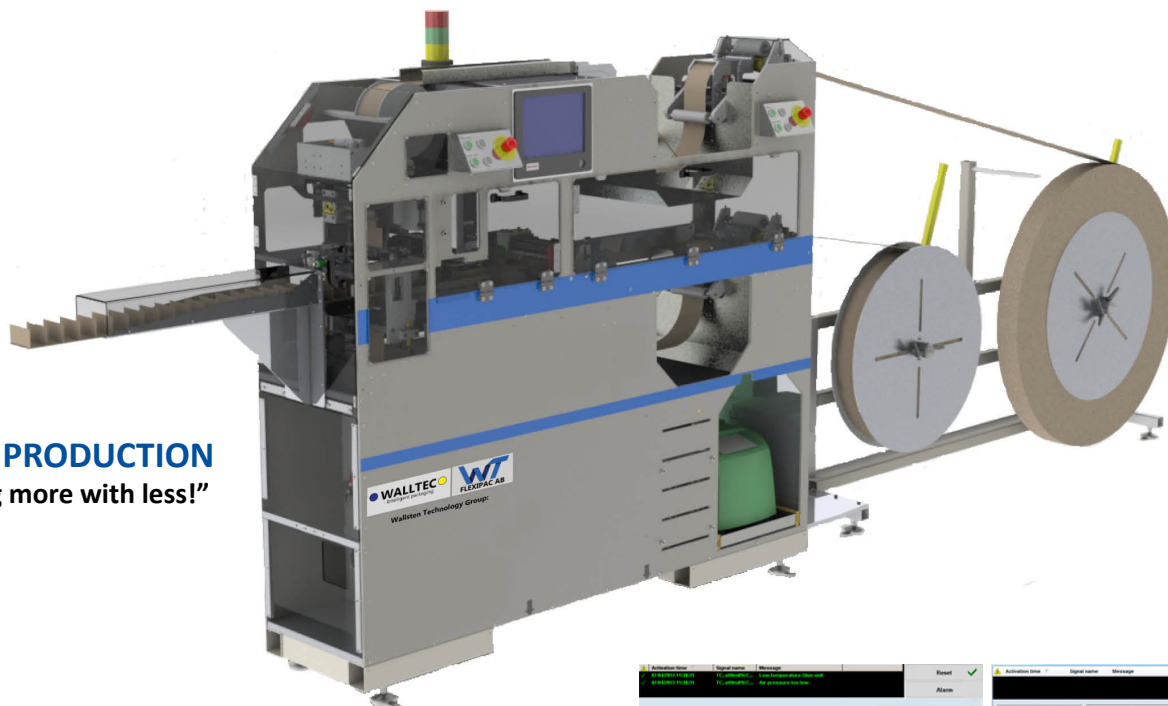
Technical specification: as above



Wallsten Technology Group:

# FLEXIPAC 5000

The **FLEXIPAC 5000** is a flexible, servo-controlled and reliable machine that produces tailor-made **FLEXICOMB**'s in high speed and easily designed the way you need them! Almost no manning needed during production! The **FLEXIPAC 5000** machine is developed with focus on quality, reliability, simplicity and quality. Nevertheless, we have chosen sub-suppliers that are "top of the line" within their area! They are also present in many countries all over the world, near our markets and customers!



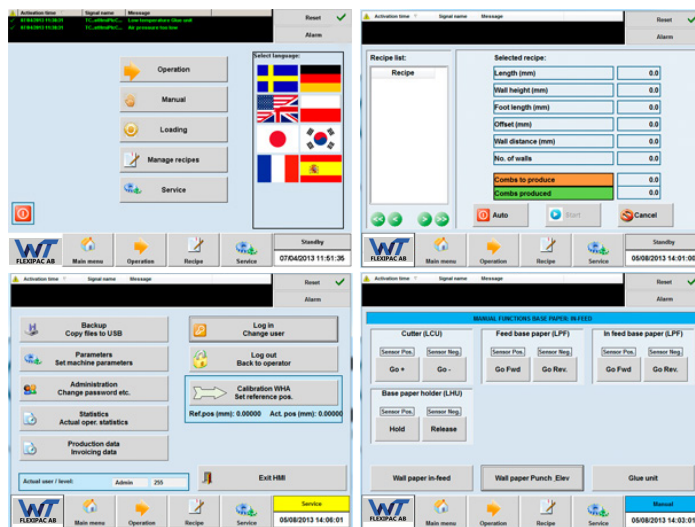
**LEAN PRODUCTION**  
"Doing more with less!"

Electronic hardware and software are delivered by Beckhoff and is based on their well proven TwinCAT system. The HMI system is based on Microsoft WINDOWS and displayed on a touch screen with simple menus.

SMC is delivering the pneumatic parts for the **FLEXIPAC 5000** machine.

The walls on the **FLEXICOMB**'s are glued together with hot melt glue that dries instantly. We have chosen worldwide well known ROBATECH as our supplier of this equipment.

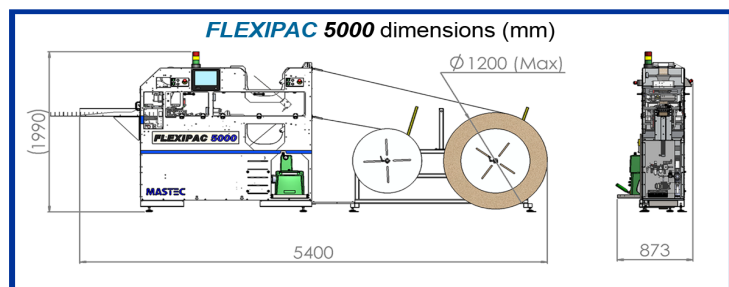
The **FLEXIPAC 5000** machine is also equipped with a warning system (light tower) that indicates if the machine is running, waiting or for some reason has stopped!



The **FLEXIPAC 5000** GUI enables easy programming and quick modification between different recipes. The total changeover time between different **FLEXICOMB** recipes for production is about approximately 15 seconds.

**NEW funktion ORDERLIST**, with possibilities to program 10 production orders into one order.

Different languages can be chosen and/or altered by the operator. This system can also be connected to the company network as well as to "Internet" for backup, diagnostics, service and troubleshooting!



Wallsten Technology AB  
Annebergsvägen 18  
571 76 Solberga  
Sweden

WT-FLEXIPAC AB  
Annebergsvägen 18  
571 76 Solberga  
Sweden

Contact:  
E-mail: wallpac@walltec.se  
E-mail: WT-Flexipac@waltec.se  
Phone: +46 (0)70 640 40 97

**WALLTEC**  
- Intelligent packaging

**WT**  
**FLEXIPAC AB**

Wallsten Technology Group: